

Microflex PE-X terminal connections

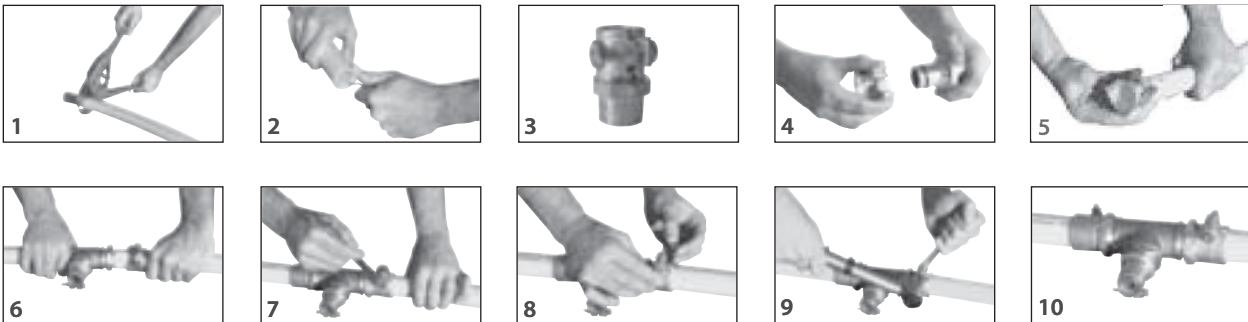


Microflex PE-X connections are professional fittings for central heating, cooling and sanitary applications. They are available in a straight version with male thread:

- in 25 to 110 mm sizes for a pressure of 6 bar (0.6 Mpa/84 Psi) for central heating
- in 20 to 63 mm sizes for a pressure of 10 bar (1 Mpa/140 Psi) for sanitary applications

Microflex PE-X terminal connections can be combined with a variety of threaded fittings to make tees, elbows and other ancillary connections.

Assembly instructions



- 1 Cut the PE-X pipe at a right angle with a pair of PE-X scissors or a pipe cutter.
- 2 Deburr the pipe with an appropriate tool.
- 3 / 4 The clamping ring is loosely attached to the coupling with a nut that clamps open the clamping ring in a steel plate. This clamping ring can be removed freely.
- 5 Slide the clamping ring over the pipe. NB! Do NOT rotate the clamping ring. Ensure that the notch on the inside of the clamping ring is facing the fitting.
- 6 Push the pipe COMPLETELY over the coupling.
- 7 Slide the clamping ring back to COMPLETELY cover the fitting.
- 8 Remove the bolt and the steel plate.
- 9 / 10 Assemble the bolt, washer and nut provided and tighten the clamping nut in accordance with the following moments of force:

Ø	S	M
20 mm	M 8	8 Nm
25 mm	M 8	8 Nm
1" (USA / Canada)	M 8	8 Nm
32 mm	M 8	8 Nm
40 mm	M 8	10 Nm
50 mm	M 10	40 Nm
63 mm	M 12	70 Nm
75 mm	M 12	70 Nm
90 mm	M 16	110 Nm
110 mm	M 16	110 Nm

The tightness should always be tested as follows. Bleed the complete installation and apply 1.5 times the normal working pressure for 30 minutes. Verify the tightness of the fittings.

Relieve the installation very fast to half the normal working pressure. Make sure you close the relief valve quickly as soon as the desired pressure is reached. When this new minimum pressure can be maintained for 90 minutes, the pipes and the fittings are tight. Then check the fittings visually.

Remark:

please make sure to lubricate the threads on bolt and nut, as well as the washer(s).